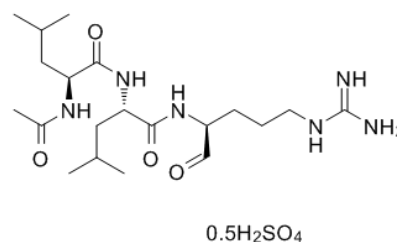


Product Name : Leupeptin hemisulfate
Cat. No. : PC-45438
CAS No. : 103476-89-7
Molecular Formula : C₂₀H₃₈N₆O₄ · 1/2H₂SO₄
Molecular Weight : 475.59
Target : Cathepsin
Solubility : H₂O: ≥ 19 mg/mL



Biological Activity

Leupeptin hemisulfate is a potent, reversible inhibitor of cysteine, serine, and threonine proteases, inhibits cathepsin B (K_i=6 nM), calpain (K_i=10 nM), trypsin (K_i=35 nM), plasmin (K_i=3.4 μM), and kallikrein (K_i=19 μM), and has no effect against chymotrypsin, elastase, renin, or pepsin.

References

Berger DM, et al. Bioorg Med Chem Lett. 2009 Dec 1;19(23):6519-23.

Mehdi S. Trends Biochem Sci. 1991 Apr;16(4):150-3.

Caution: Product has not been fully validated for medical applications. Lab Use Only!

E-mail: tech@probechem.com